

B U I L T T O
PROTECT



INTRODUCING...THE FIRST MULTI-SURFACE ANTIMICROBIAL
TABLES & CARTS FOR LEARNING AND TRAINING ENVIRONMENTS



Bretford Manufacturing, Inc. is the **first to introduce multi-surface antimicrobial finishes** on more than **50 different tables and carts** for **learning and training environments**. These finishes are intended to **help prevent the spread of microbes**, such as bacteria, mold, mildew and fungi on the product's surface. With **Bretford's Microbe Barrier Technologies™ antimicrobial surface protection**, the technology is built into the product during the manufacturing process and becomes an intrinsic part of the product inside and at the surface. By reducing the growth and spread of bacteria on the product's surface, the product acts as an additional line of defense to good hygiene practices.

GET MORE FIGHT IN THE FINISH



Microbe Barrier Technologies is a trademarked name for Bretford's protective antimicrobial surface finishes. They are a blend of polymers and other substances that are coated onto **more than 50 Bretford tables and carts** to help prevent the spread of product damaging microbes on the surface. These finishes do not change the physical or mechanical characteristics of the products.

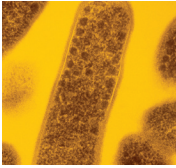
Through extensive studies, these colorless, odorless finishes have been found to inhibit the microbes ability to reproduce and spread on the product.

Antimicrobial technology is already fighting microbes in the **medical industry** on the surfaces of beds, flooring and medical devices. Those in **agriculture** and **marine environments** depend on antimicrobial technology to control mold and mildew. **Public spaces** are being protected on bacteria transfer points, such as bathroom fixtures, touch screens and other **multi-touch surfaces** like carpet and credit cards.

Shared public spaces, such as learning and training environments, are especially vulnerable to microbes and their transmission to others. For example, a recent study by researchers at the University of Arizona found that classrooms are some of the most germ-filled public places.¹ **Cross-contamination** occurs when people touch these surfaces and transfer microbes to other objects and people.

While the best way to reduce the transfer of surface microorganisms is still **good hand hygiene** and **effective surface cleaning products**, Bretford's Microbe Barrier Technologies complement these efforts.





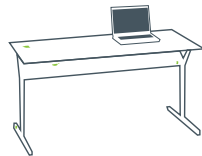
The Journal of Infection Prevention reports that “...continuous decontamination of a healthcare environment can be achieved by materials integrated into this environment that possess antimicrobial properties...”²



CONTAMINATION ON SURFACES



WITHOUT MBT



WITH MBT

ONE MICROBE CAN GROW TO BECOME MORE THAN 8 MILLION GERMS IN JUST ONE DAY.³



SUPPORT HIGHER ACHIEVEMENT AND IMPROVE ATTENDANCE

Studies show that higher attendance is related to higher achievement. Students who regularly attend school score higher on achievement tests.⁴ And, a UCLA study reported that when children and teachers feel better and miss fewer days, test scores rise 11-17 percent.



ENHANCE PRODUCTIVITY AND ACHIEVE GREATER SUCCESS

The health of individuals in an organization directly impacts the collective capacity and competency of the organization. “The health of the workforce is inextricably linked to its productivity and therefore the health of the company’s bottom line.....Today’s reality is that health is a performance driver for business and the industry.”⁵

“About 80 percent of all common illnesses are transmitted through water, food, air and touch surfaces” according to Dr. Charles P. Gerba, University of Arizona Microbiologist. So, **it’s important to make the surfaces of tables and carts as microbe-free as possible.** While diligent hand hygiene and surface cleaning remain the best methods to prevent the spread of microbes, **Microbe Barrier Technologies™ (MBT)** provides additional peace of mind.



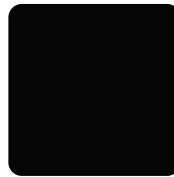
THE FINISH LINE IN REDUCING GERMS

There's no need to sacrifice form for function. Bretford's Microbe Barrier Technologies™ is available on a broad line of carts and tables.

PAINT COLOR OPTIONS:



Anthracite (-AN)



Black Pumice (-BP)



Concrete (-CT)

CARTS

LAPTOP CARTS

Model #	Description
LAPTG15ESA-CTMBT	15-unit laptop cart with electrical, concrete
LAPTG15SA-CTMBT	15-unit laptop cart, concrete
LAP18EULBA-CTMBT	18-unit UL-listed laptop cart with electrical in the back, concrete
LAP18EULFR-CTMBT	18-unit UL-listed laptop cart with electrical in the front, concrete
LAP24EULBA-CTMBT	24-unit UL-listed laptop cart with electrical in the back, concrete
LAP24EULFR-CTMBT	24-unit UL-listed laptop cart with electrical in the front, concrete
LAP30EULBA-CTMBT	30-unit UL-listed laptop cart with electrical in the back, concrete
LAP30EULFR-CTMBT	30-unit UL-listed laptop cart with electrical in the front, concrete
NETBOOK32-ANMBT	32-unit micro laptop cart with electrical in the back, anthracite

PRESENTER'S ASSISTANT FOR LEARNING PROJECTOR CARTS

Model #	Description
TCPUL23-CTMBT	PAL presenter's assistant for learning projector cart with 4" twin wheel casters, concrete
TCPUL23-BPMBT	PAL presenter's assistant for learning projector cart with 4" twin wheel casters, black pumice
TCPUL23FF-CTMBT	PAL presenter's assistant for learning projector cart with 10-outlet electric, 4" twin wheel casters, concrete
TCPUL23FF-BPMBT	PAL presenter's assistant for learning projector cart with 10-outlet electric, 4" twin wheel casters, black pumice
TCP23-CTMBT	PAL presenter's assistant for learning projector cart with 4" hard rubber casters, concrete
TCP23-BPMBT	PAL presenter's assistant for learning projector cart with 4" hard rubber casters, black pumice
TCP23FF-CTMBT	PAL presenter's assistant for learning projector cart with 10-outlet electric, 4" hard rubber casters, concrete
TCP23FF-BPMBT	PAL presenter's assistant for learning projector cart with 10-outlet electric, 4" hard rubber casters, black pumice

ECILS SERIES CARTS

Model #	Description
ECILS1-CTMBT	mobile projector cart, 32"W x 24"D x 42"H, concrete
ECILS1-BPMBT	mobile projector cart, 32"W x 24"D x 42"H, black pumice
ECILS1FF-CTMBT	mobile projector cart with 4-outlet electric, 32"W x 24"D x 42"H, concrete
ECILS1FF-BPMBT	mobile projector cart with 4-outlet electric, 32"W x 24"D x 42"H, black pumice
ECILS2-CTMBT	mobile projector cart, 24"W x 18"D x 42"H, concrete
ECILS2-BPMBT	mobile projector cart, 24"W x 18"D x 42"H, black pumice
ECILS2M-CTMBT	mobile projector cart with 3-outlet electric, 24"W x 18"D x 42"H, concrete
ECILS2M-BPMBT	mobile projector cart with 3-outlet electric, 24"W x 18"D x 42"H, black pumice
ECILS3-CTMBT	mobile projector cart, 32 ¹ / ₄ "W x 24 ¹ / ₄ "D x 31 ¹ / ₄ " - 39 ¹ / ₄ "H, concrete
ECILS3-BPMBT	mobile projector cart, 32 ¹ / ₄ "W x 24 ¹ / ₄ "D x 31 ¹ / ₄ " - 39 ¹ / ₄ "H, black pumice
ECILS3FF-CTMBT	mobile projector cart with 10-outlet electric, 32 ¹ / ₄ "W x 24 ¹ / ₄ "D x 31 ¹ / ₄ " - 39 ¹ / ₄ "H, concrete
ECILS3FF-BPMBT	mobile projector cart with 10-outlet electric, 32 ¹ / ₄ "W x 24 ¹ / ₄ "D x 31 ¹ / ₄ " - 39 ¹ / ₄ "H, black pumice
ECILS15-CTMBT	mobile projector cart, 32"W x 24"D x 33"H, concrete
ECILS15-BPMBT	mobile projector cart, 32"W x 24"D x 33"H, black pumice
ECILS15FF-CTMBT	mobile projector cart with 4-outlet electric, 32"W x 24"D x 33"H, concrete
ECILS15FF-BPMBT	mobile projector cart with 4-outlet electric, 32"W x 24"D x 33"H, black pumice

PRODUCT TESTING:

Testing for microbe resistance according to standard methods, AATCC Test Method 100 and JIS Z 2801.

THE FINISH LINE IN REDUCING GERMS

CONTINUED

TABLES

FRONT TABLE EDGES:



Bullnose

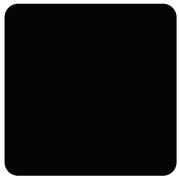


Waterfall

BASE PAINT COLOR OPTIONS:



Anthracite (-AN)



Black Pumice (-BP)



Concrete (-CT)

TOP COLOR OPTION:



Concrete (-CT)



CONNECTIONS SERIES TABLES

Front Edge: Waterfall
Base Paint Color Options: -AN, -BP, -CT
Top Color Option: -CT

Model #	Description
MBT3569	36"W x 24"D table with glides
MBT3520	36"W x 24"D table with casters
MBT3521	36"W x 30"D table with glides
MBT3517	36"W x 30"D table with casters
MBT3561	60"W x 24"D table with glides
MBT3560	60"W x 24"D table with casters
MBT3565	72"W x 24"D table with glides
MBT3564	72"W x 24"D table with casters
MBT3524	60"W x 30"D table with glides
MBT3519	60"W x 30"D table with casters
MBT3525	72"W x 30"D table with glides
MBT3526	72"W x 30"D table with casters

QUATTRO VOLTEA SERIES TABLES

Front Edge: Waterfall
Base Paint Color Options: -AN, -BP, -CT
Top Color Option: -CT

Model #	Description
MBTQFT2436	36"W x 24"D table with glides
MBTQFT3036	36"W x 30"D table with glides
MBTQFT2460	60"W x 24"D table with glides
MBTQFT2472	72"W x 24"D table with glides
MBTQFT3060	60"W x 30"D table with glides
MBTQFT3072	72"W x 30"D table with glides

QUATTRO COMPUTER SERIES TABLES

Front Edge: Waterfall
Base Paint Color Options: -AN, -BP, -CT
Top Color Option: -CT

Model #	Description
MBTQWTCP2436	36"W x 24"D table with glides
MBTQWTCP3036	36"W x 30"D table with glides
MBTQWTCP2460	60"W x 24"D table with glides
MBTQWTCP2472	72"W x 24"D table with glides
MBTQWTCP3060	60"W x 30"D table with glides
MBTQWTCP3072	72"W x 30"D table with glides

QUATTRO SERIES STUDENT TABLES

Front Edge: Waterfall
Base Paint Color Options: -AN, -BP, -CT
Top Color Option: -CT

Model #	Description
MBTCDQ2430	30"W x 24"D table with glides
MBTCDQ3030	30"W x 30"D table with glides
MBTCDQ2460	60"W x 24"D table with glides
MBTCDQ2472	72"W x 24"D table with glides
MBTCDQ3060	60"W x 30"D table with glides
MBTCDQ3072	72"W x 30"D table with glides

QUATTRO SERIES ACTIVITY TABLES

Front Edge: Bullnose
Base Paint Color Options: -AN, -BP, -CT
Top Color Option: -CT

Model #	Description
MBTQWT42DIA	42" round table
MBTQWT48DIA	48" round table
MBTQWT60DIA	60" round table
MBTQWT4242	42"W x 42"D square table
MBTQWT4848	48"W x 48"D square table
MBTQWT6060	60"W x 60"D square table

PRODUCT TESTING:
Testing for microbe resistance according to standard methods, AATCC Test Method 100 and JIS Z 2801.

THE FINISH LINE IN REDUCING GERMS

CONTINUED



TABLES

FRONT TABLE EDGES:

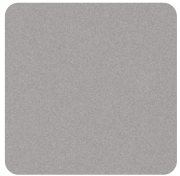


Reverse Knife



Waterfall

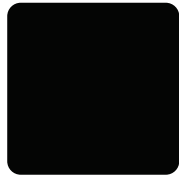
BASE PAINT COLOR OPTIONS:



Aluminum (-AL)



Anthracite (-AN)



Black Pumice (-BP)



Concrete (-CT)

TOP COLOR OPTION:



Concrete (-CT)



RHOMBII SERIES TABLES

(Available exclusively through Herman Miller)

Front Edge: Reverse Knife

Base Paint Color Options: -AL, -AN, -BP, -CT

Top Color Option: -CT

Model #	Description
MBTPRMFT6024C	60"W x 24"D fliptop casters table without modesty
MBTPRMFT6024CM	60"W x 24"D fliptop casters table with modesty panel
MBTPRMFT6024CMP	60"W x 24"D fliptop casters table with modesty and power
MBTPRMFT6024G	60"W x 24"D fliptop glides table without modesty
MBTPRMFT6024GM	60"W x 24"D fliptop glides table with modesty panel
MBTPRMFT6024GMP	60"W x 24"D fliptop glides table with modesty and power
MBTPRMFT7224C	72"W x 24"D fliptop casters table without modesty
MBTPRMFT7224CM	72"W x 24"D fliptop casters table with modesty panel
MBTPRMFT7224CMP	72"W x 24"D fliptop casters table with modesty and power
MBTPRMFT7224G	72"W x 24"D fliptop glides table without modesty
MBTPRMFT7224GM	72"W x 24"D fliptop glides table with modesty panel
MBTPRMFT7224GMP	72"W x 24"D fliptop glides table with modesty and power
MBTPRMFT6030C	60"W x 30"D fliptop casters table without modesty
MBTPRMFT6030CM	60"W x 30"D fliptop casters table with modesty panel
MBTPRMFT6030CMP	60"W x 30"D fliptop casters table with modesty and power
MBTPRMFT6030G	60"W x 30"D fliptop glides table without modesty
MBTPRMFT6030GM	60"W x 30"D fliptop glides table with modesty panel
MBTPRMFT6030GMP	60"W x 30"D fliptop glides table with modesty and power
MBTPRMFT7230C	72"W x 30"D fliptop casters table without modesty
MBTPRMFT7230CM	72"W x 30"D fliptop casters table with modesty panel
MBTPRMFT7230CMP	72"W x 30"D fliptop casters table with modesty and power
MBTPRMFT7230G	72"W x 30"D fliptop glides table without modesty
MBTPRMFT7230GM	72"W x 30"D fliptop glides table with modesty panel
MBTPRMFT7230GMP	72"W x 30"D fliptop glides table with modesty and power

PXC C-BASE TRANSTABLES

(Available exclusively through Herman Miller)

Front Edge: Waterfall

Base Paint Color Options: -AL, -AN, -BP, -CT

Top Color Option: -CT

Model #	Description
MBTPXC2460	60"W x 24"D table
MBTPXC2472	72"W x 24"D table
MBTPXC3060	60"W x 30"D table
MBTPXC3072	72"W x 30"D table

PRODUCT TESTING:

Testing for microbe resistance according to standard methods, AATCC Test Method 100 and JIS Z 2801.



BRET FORD

WWW.BRET FORD.COM

BRET FORD, B DESIGN AND MICROBE BARRIER TECHNOLOGIES DESIGN
ARE TRADEMARKS OR REGISTERED MARKS OF BRET FORD, INC.
PATENT PENDING. ALL RIGHT RESERVED.

11000 SEYMOUR AVENUE
FRANKLIN PARK, ILLINOIS 60131 USA
TOLL FREE PHONE 800-521-9614
PHONE 847-678-2545
TOLL FREE FAX 800-343-1779
FAX 847-678-0852